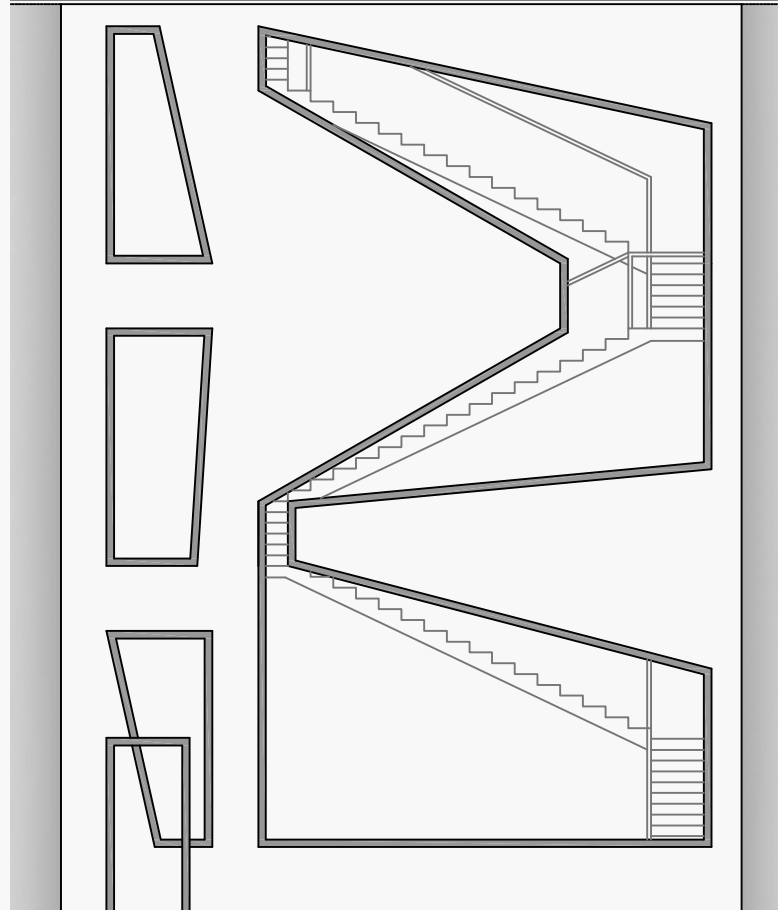
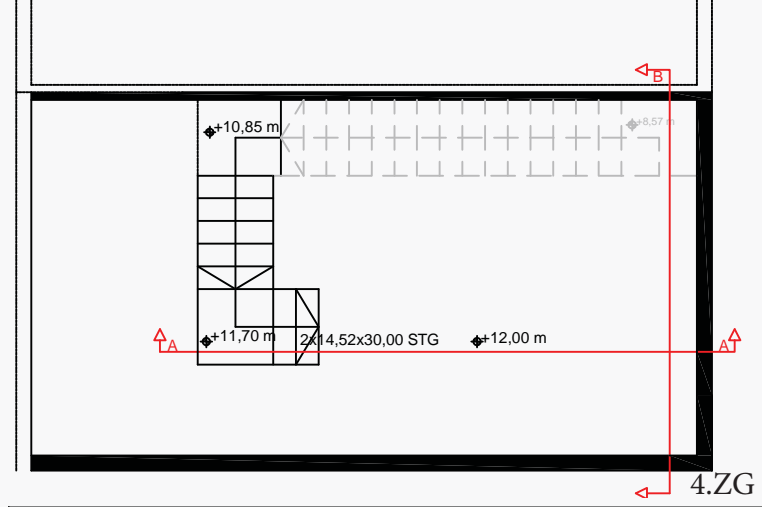
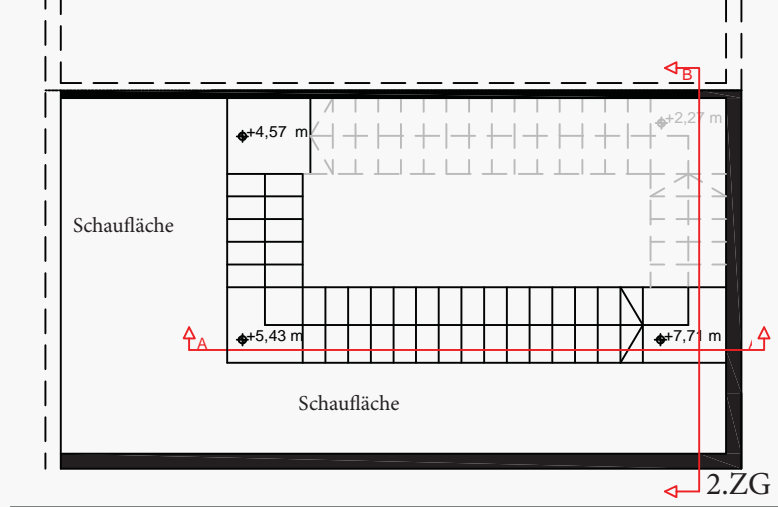
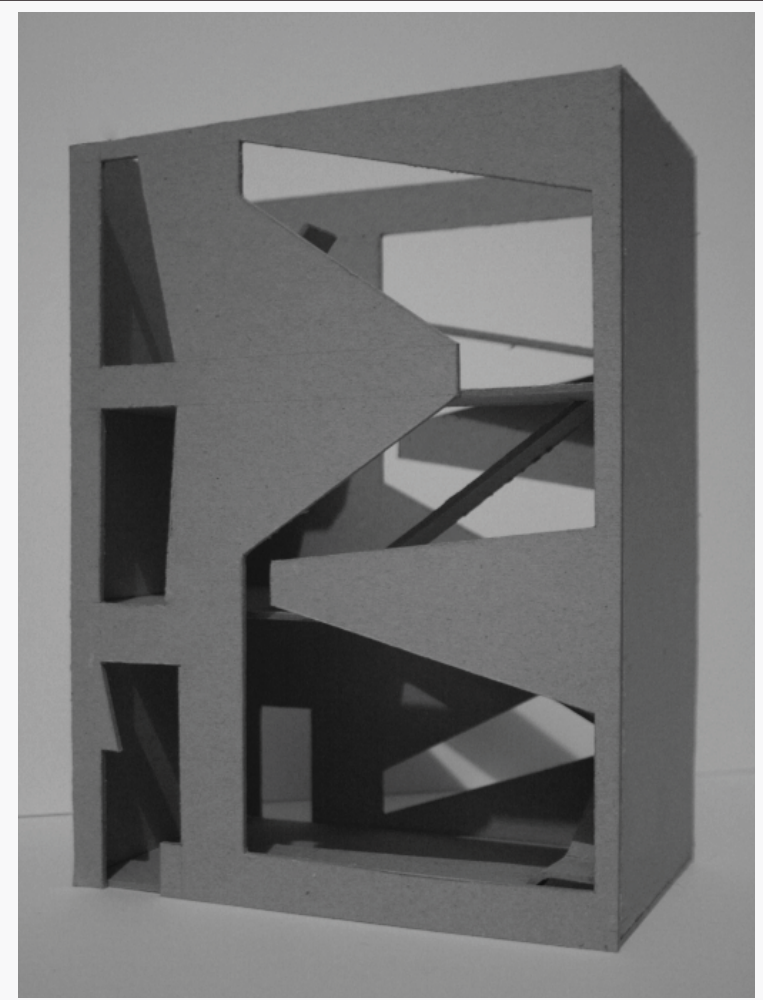
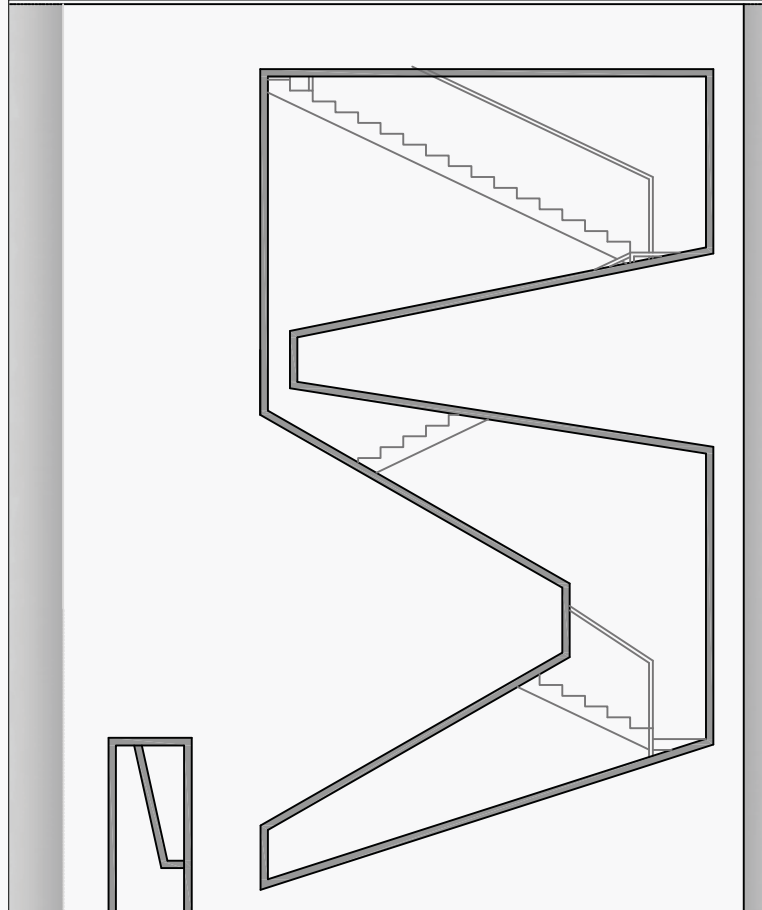


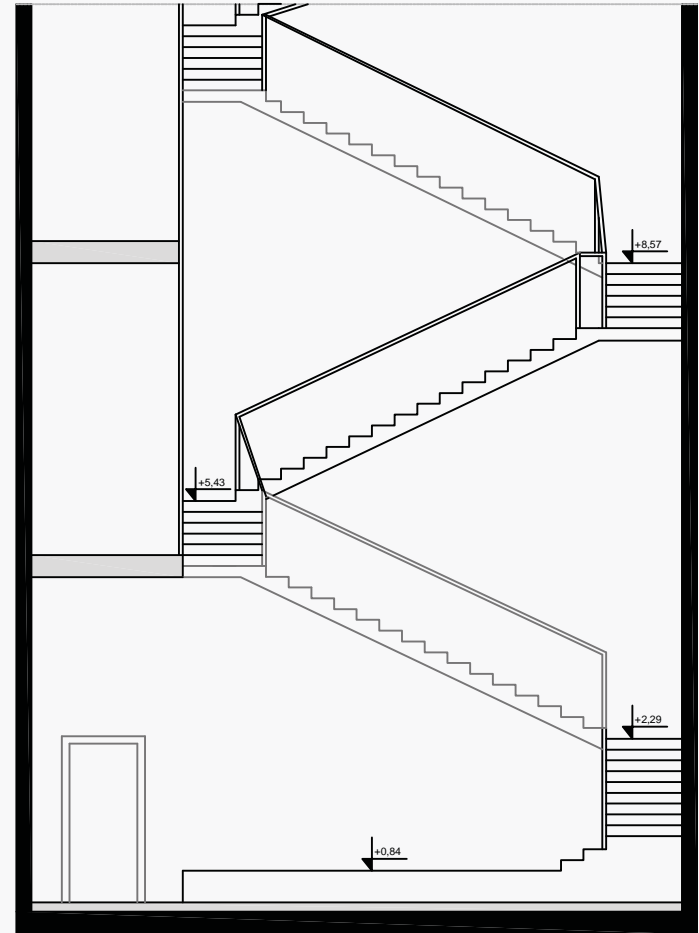
Die Hauptidee meines Konzeptes ist 'das Band', das wir in dem Schaufenster der Mariana sehen. Das Band ist die unkontinuierliche Erschließung vom Teil A bis zum Teil C. Das ist der Weg nach oben, wo man verschiedene Realitäten treffen kann. Die diversen Fassadenöffnungen zeigen die Bewegung der Passanten unter unterschiedlichen Blickwinkel und Lichtmenge.



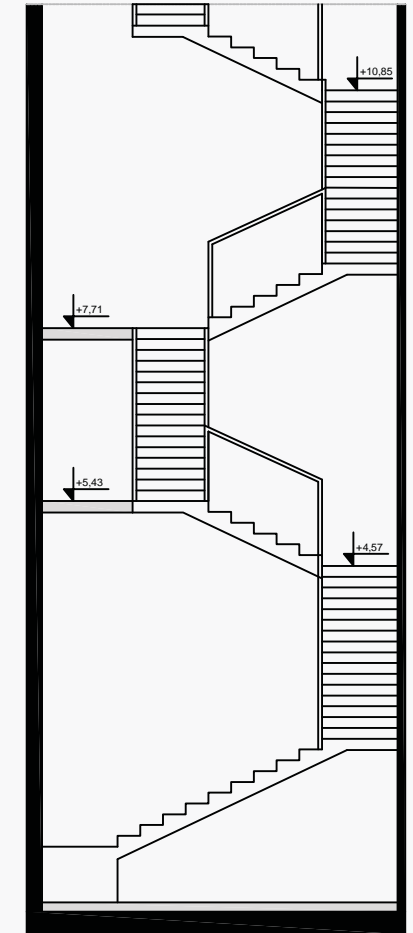
Strassenansicht



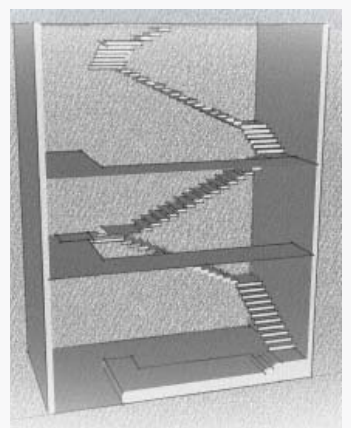
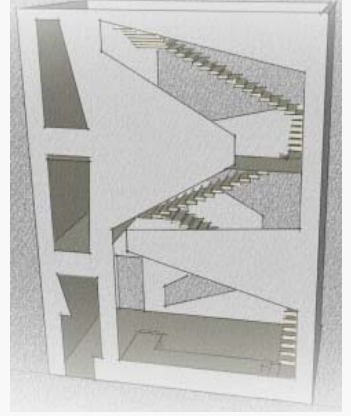
Ansicht Hofseite



Schnitt A-A

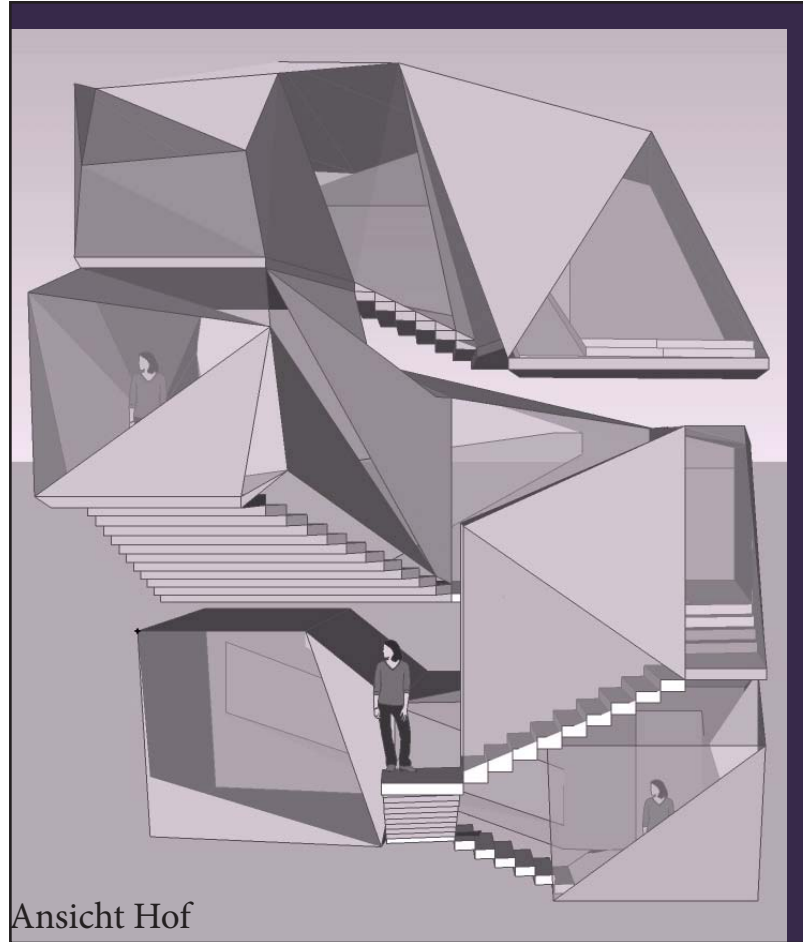


Schnitt B-B

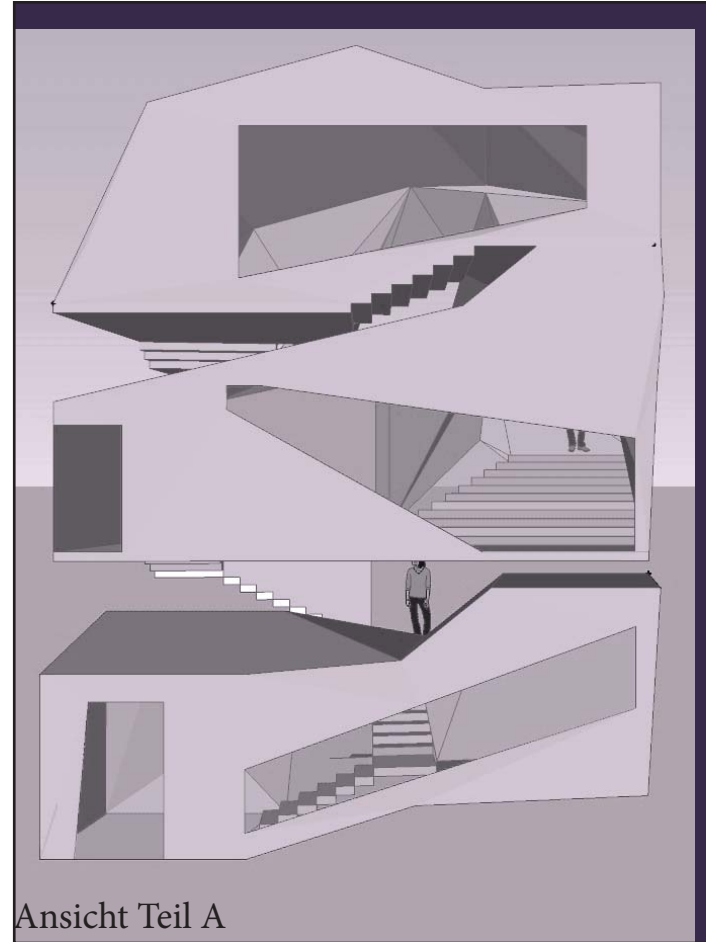


Skizzen

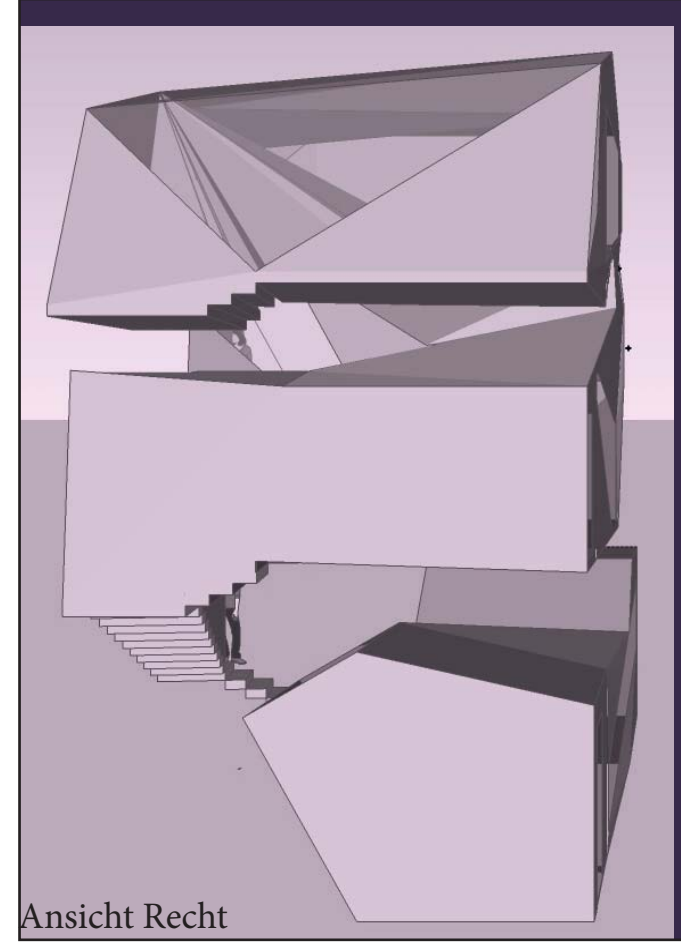




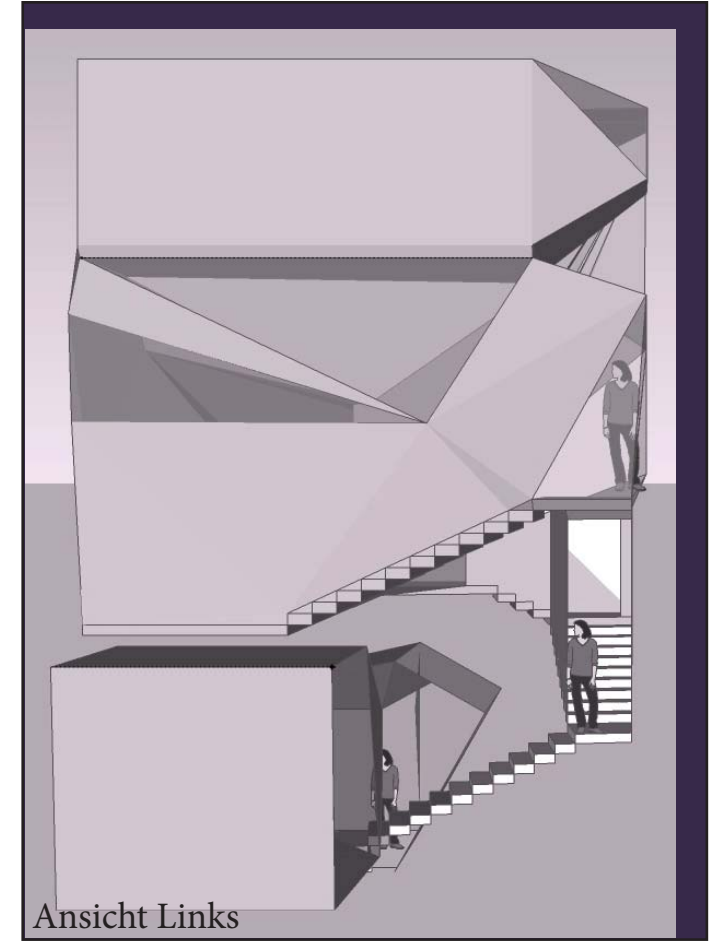
Ansicht Hof



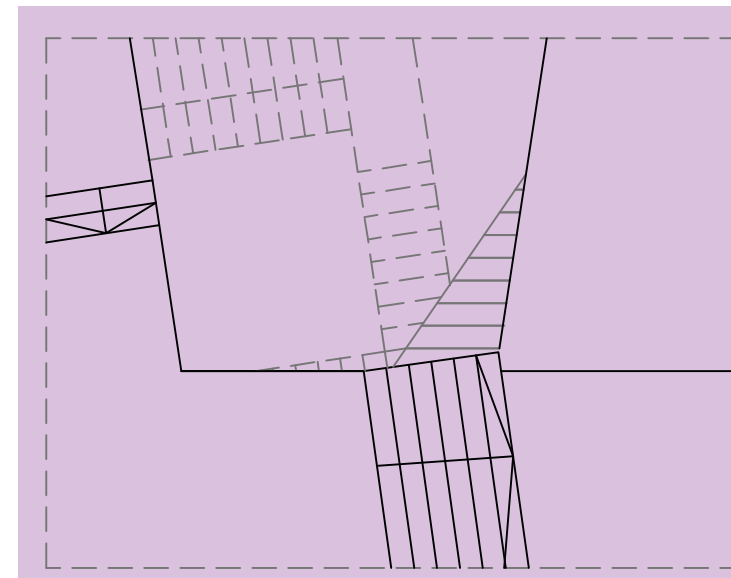
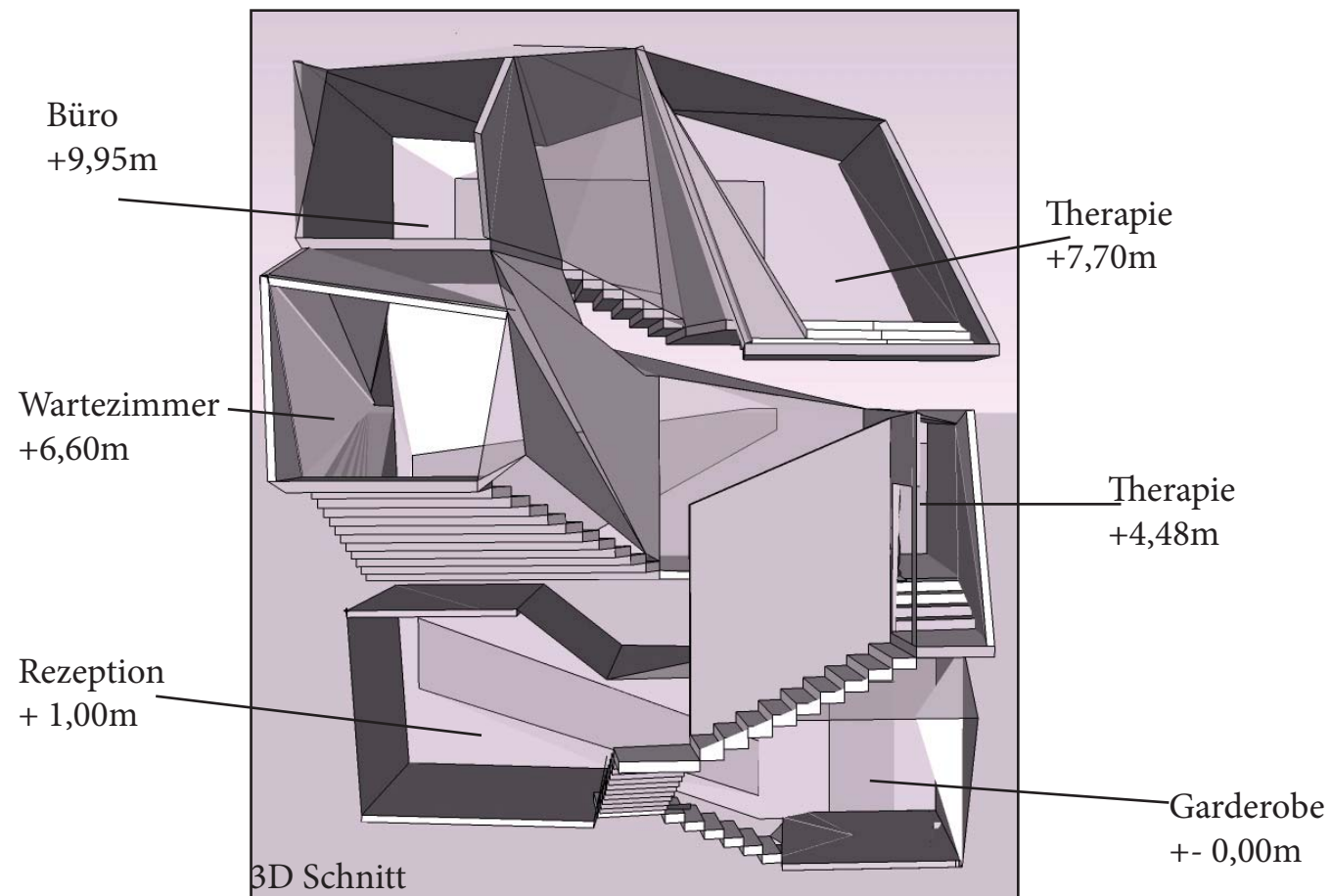
Ansicht Teil A



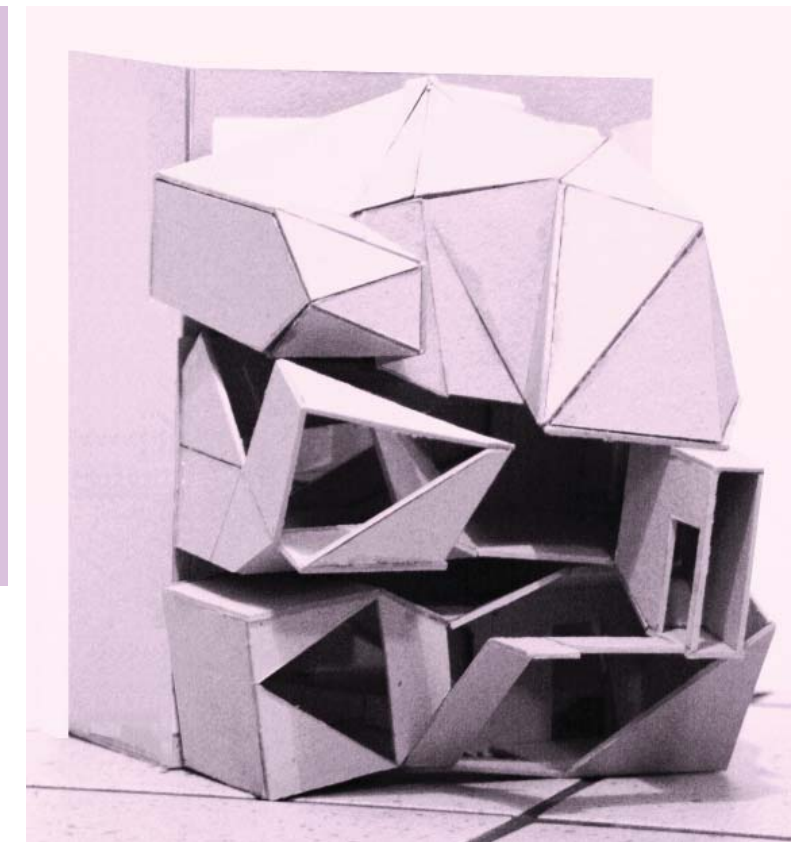
Ansicht Recht



Ansicht Links



Grundriss Erschließung



Modell



